

300D 2000B



300D



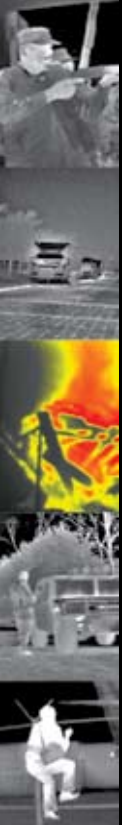
*Selected #1 in image quality
in recent independent surveys.*



2000B

- Sealed-package, long wavelength infrared camera core
- Utilizes industry-leading Barium Strontium Titanate (BST) detector technology (320 x 240 pixel array)
- Fully validated and fielded in military, fire, security, industrial and automotive applications

300D/2000B FEATURES	300D/2000B BENEFITS
"GOLD-STANDARD" IMAGE QUALITY	Absolutely the lowest spatial noise under the most challenging nighttime conditions, guaranteeing a clear image
IMMUNITY TO SOLAR RADIATION	BST is the only LWIR uncooled camera technology to be immune to direct solar exposure in any geographic location and for any length of time (no expensive filters required)
PLUG AND PLAY	Easily integrates with off-the-shelf image processing software for 24/7 operations, and continuously updated image is never interrupted by a shutter sequence
WORLDWIDE VIDEO COMPATIBILITY	Provides standard NTSC or PAL video output
INTEGRATION SUPPORT	Leading-edge technical support
ADDITIONAL 2000B FEATURES	ADDITIONAL 2000B BENEFITS
REAL-TIME SOFTWARE CONTROL	Using the 2000B kit and Control IR Manager software utility, camera NUC & pixel substitution can be updated on-site providing real-time updates and control
BUILT-IN CONFIGURABLE IMAGE PROCESSING	Enhanced resolution and sensitivity via the RS-232 computer control interface



300D/2000B TECHNICAL SPECIFICATIONS:

FEATURES		THERMAL-EYE 300D				THERMAL-EYE 2000B			
Focal Plane Array	Material & Structure	Uncooled Ferroelectric (320 x 240 pixel array)							
	Spectral Response	7-14µm (filter bandwidth)							
	Thermal Sensitivity	≤100mK							
Thermal Imaging System Performance	Start-up Time	< 30 seconds (typical) < 90 seconds (max)							
	Contrast/Brightness	Automatic or Manual (Note: Manual controlled gain, level and polarity requires 4 and 8 wire configuration)				Automatic, manual or RS-232 controlled gain, level and polarity			
Optics (All six lenses available for both cameras)	Lens Options	18mm	25mm	50mm	75mm	100mm	150mm		
	Range to Detect Human Activity	Up to 700ft (215m)	Up to 1000ft (305m)	Up to 1900ft (580m)	Up to 3000ft (915m)	Up to 3700ft (1130m)	Up to 5900ft (1800m)		
	Minimum Focus Distance	~10ft (3m)	~18" (.5m)	~18" (.5m)	~20ft (6m)	~15ft (5m)	~25ft (8m)		
	Focus Method	Fixed Focus with Iris	Manual Focus with Iris	Manual Focus with Iris	Manual Focus with Iris	Electric motor focus	Electric motor focus		
	Field of View	45° x 35°	36° x 27°	18° x 13.5°	12° x 9°	9° x 6.6°	6° x 4.4°		
Video	Output Format	NTSC/PAL Compatible (Factory Setting)				NTSC/PAL Compatible (Factory Setting) and Digital Output			
	Electronic Digital Zoom	1X				1X, 2X / RS-232 Controlled			
Power	Input Voltage	9 to 28VDC							
	Input Power	< 1A (Steady State)							
Physical Characteristics	Size with 18mm lens	2.9"L x 4"W x 4.9"H (74mm L x 102mm W x 125mm H)				3.7"L x 4"W x 4.9"H (94mm L x 102mm W x 125mm H)			
	Weight with 18mm lens	1.5lbs (.68kg)				1.6lbs (.73kg)			
Environmental Characteristics	Operating Temperature	-22°F to 150.8°F (-30°C to 66°C) -4°F to 150.8°F for motorized focus only (-20°C to 66°C)				-4°F to 150.8°F (-20°C to 66°C) -4°F to 150.8°F for motorized focus only (-20°C to 66°C)			
	Storage Temperature	-40°F to 176°F (-40°C to 80°C)							
		THERMAL-EYE 300D				THERMAL-EYE 2000B			
Ordering Information		NTSC 4 wire	NTSC 4 & 8 wire	PAL 4 wire	PAL 4 & 8 wire	NTSC Camera Only	NTSC Kit	PAL Camera Only	PAL Kit
	No Lens	3261544-0009	3261544-0003	3261548-0009	3261548-0003	1000051-0001	1000050-0001	1000049-0001	1000048-0001
	No Lens with Focus connector	N/A	N/A	N/A	N/A	1000051-0002	1000050-0002	1000049-0002	1000048-0002
	18mm	3261544-0001	3261544-0002	3261548-0001	3261548-0002	1000051-0003	1000050-0003	1000049-0003	1000048-0003
	25mm	3261544-0004	3261544-0005	3261548-0004	3261548-0005	1000051-0004	1000050-0004	1000049-0004	1000048-0004
	50mm	3261544-0012	3261544-0011	3261548-0012	3261548-0011	1000051-0005	1000050-0005	1000049-0005	1000048-0005
	75mm	N/A	3261544-0006	N/A	3261548-0006	1000051-0006	1000050-0006	1000049-0006	1000048-0006
	75mm Athermalized	N/A	N/A	N/A	N/A	1000051-0007	1000050-0007	1000049-0009	1000048-0009
	100mm	N/A	3261544-0016	N/A	3261548-0016	1000051-0008	1000050-0008	1000049-0007	1000048-0007
	100mm Athermalized	N/A	N/A	N/A	N/A	1000051-0009	1000050-0009	1000049-0010	1000048-0010
Optional Accessories	Mounting Bracket	3261521-0001							
	Tripod Mounting Fixture	3231983-0001							
	Analog Cable Control	N/A for 300D				3261524-0001			
	Computer Cable Control	N/A for 300D				3223205-0001			
	Digital Control Cable	N/A for 300D				3261520-0001			
	Control IR Manager Software	N/A for 300D				3261541-0630			

Specifications subject to change without notice

300D/2000B RevD September 2006

This material is L-3 Infrared Products general capabilities information and does not contain any controlled technical data as defined within the International Traffic in Arms Regulations (ITAR) or Export Administration Regulations (EAR).

